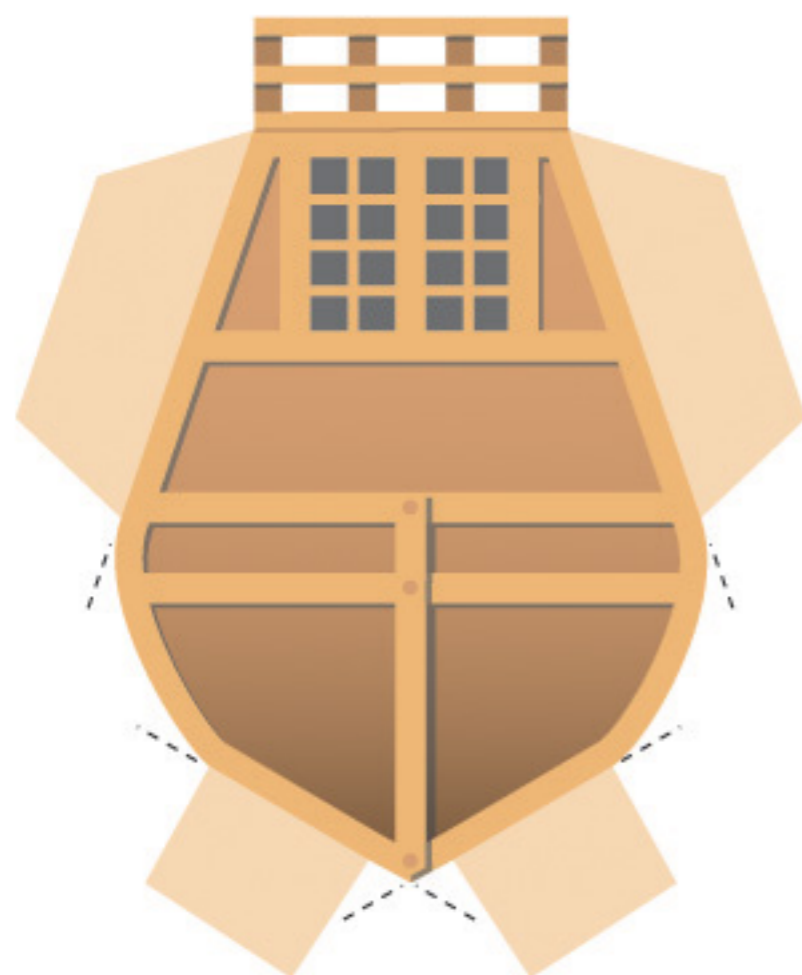
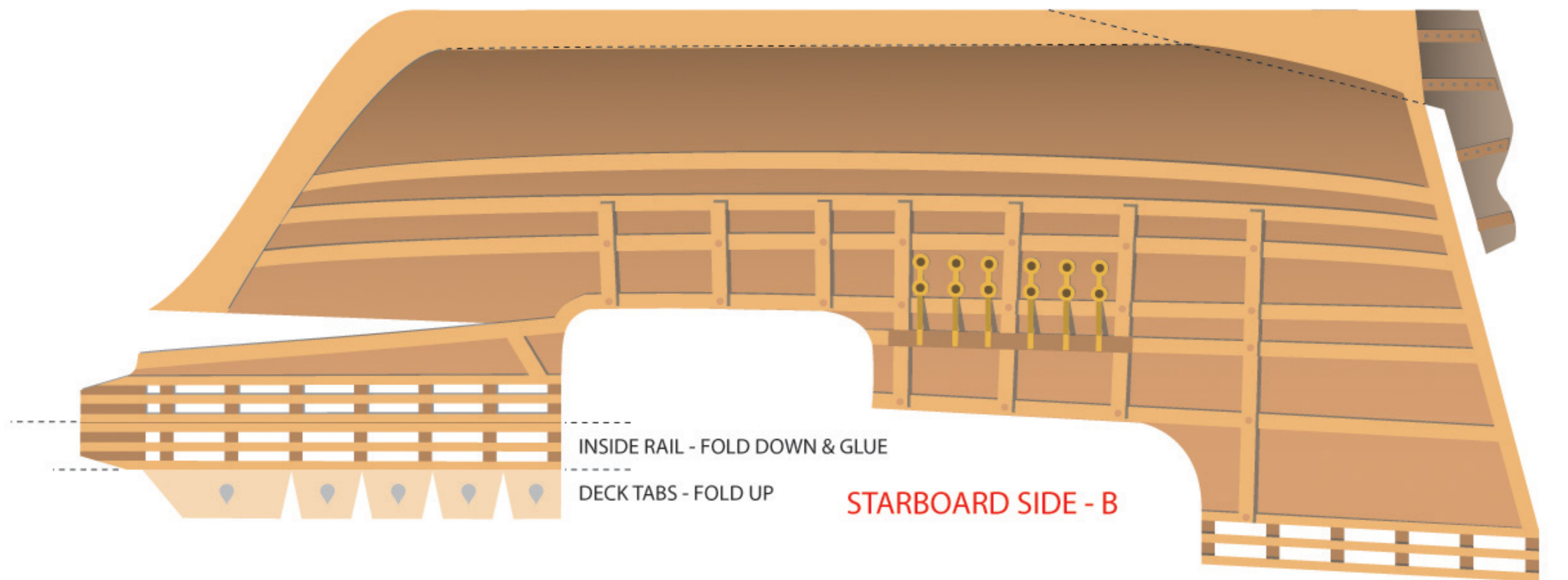
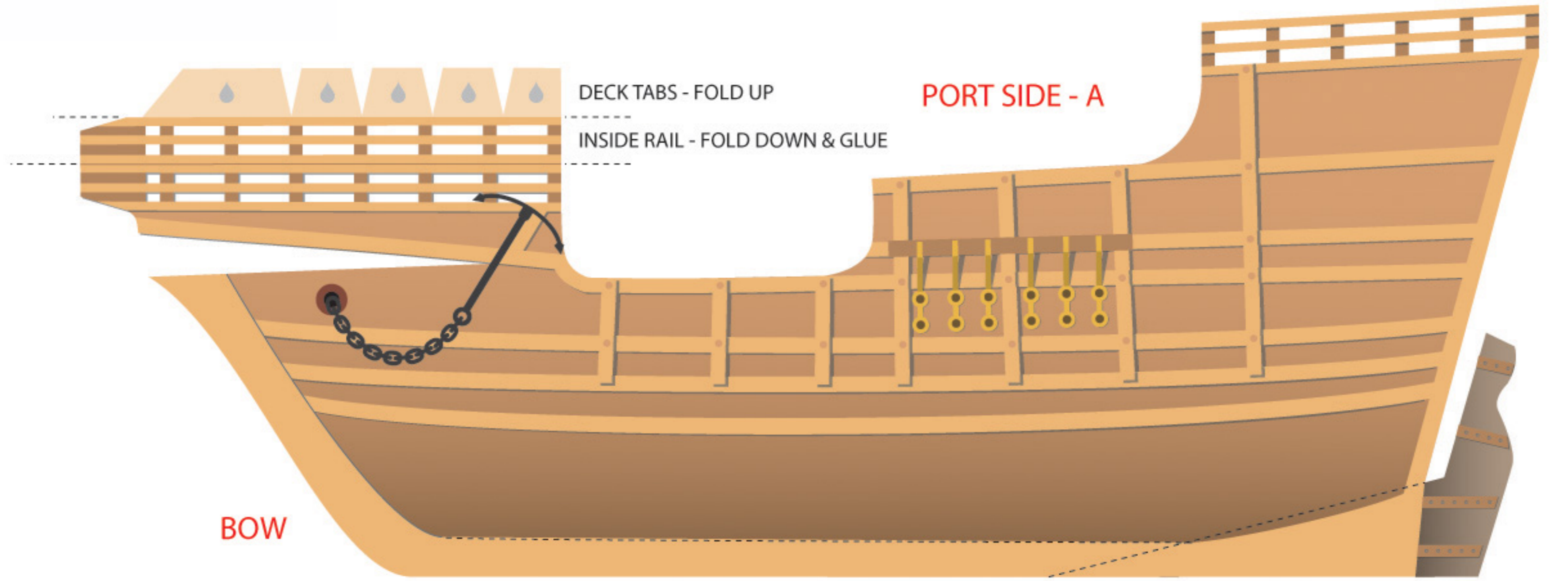




Christopher Columbus' *Santa Maria* - 1492

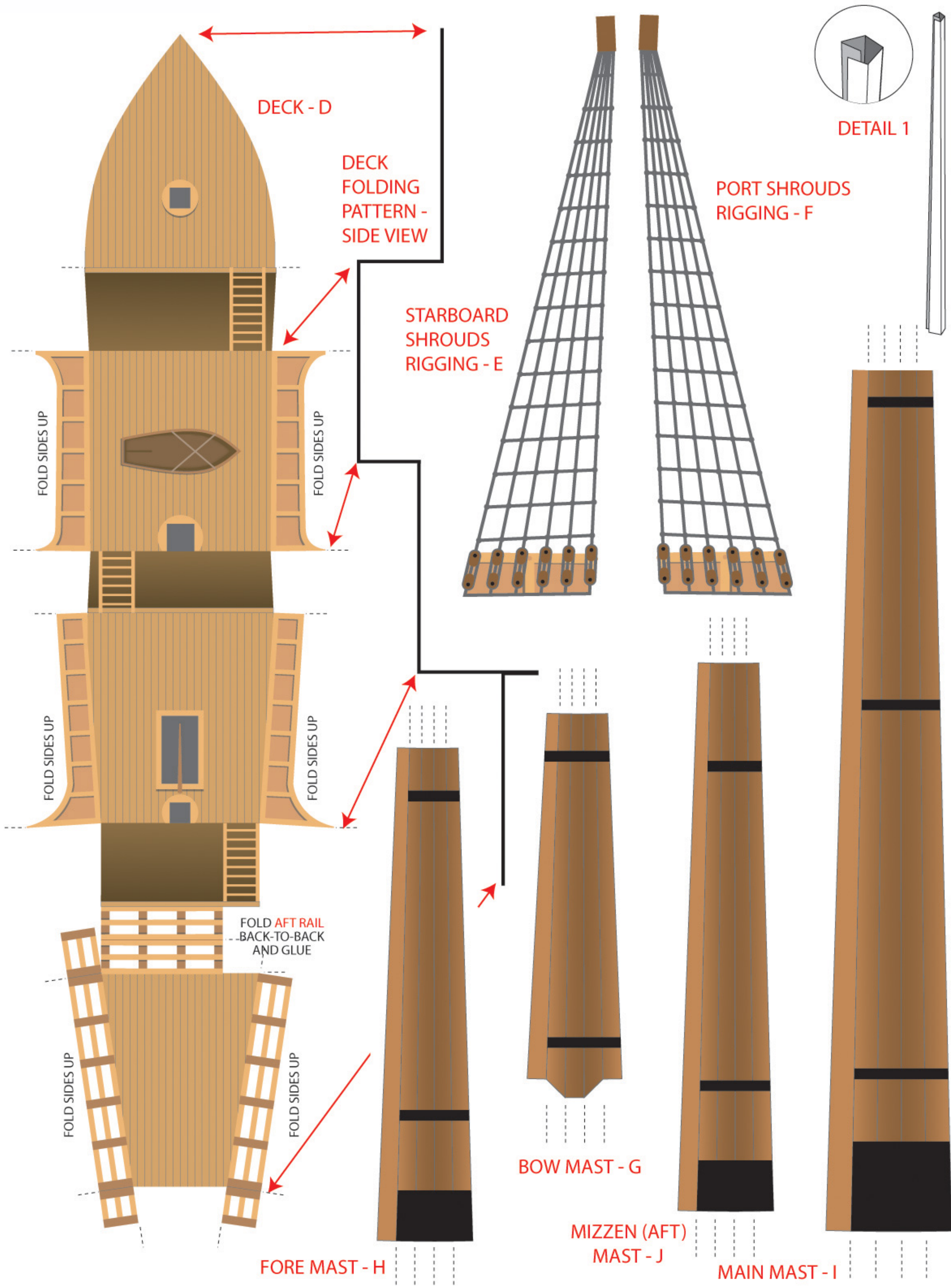


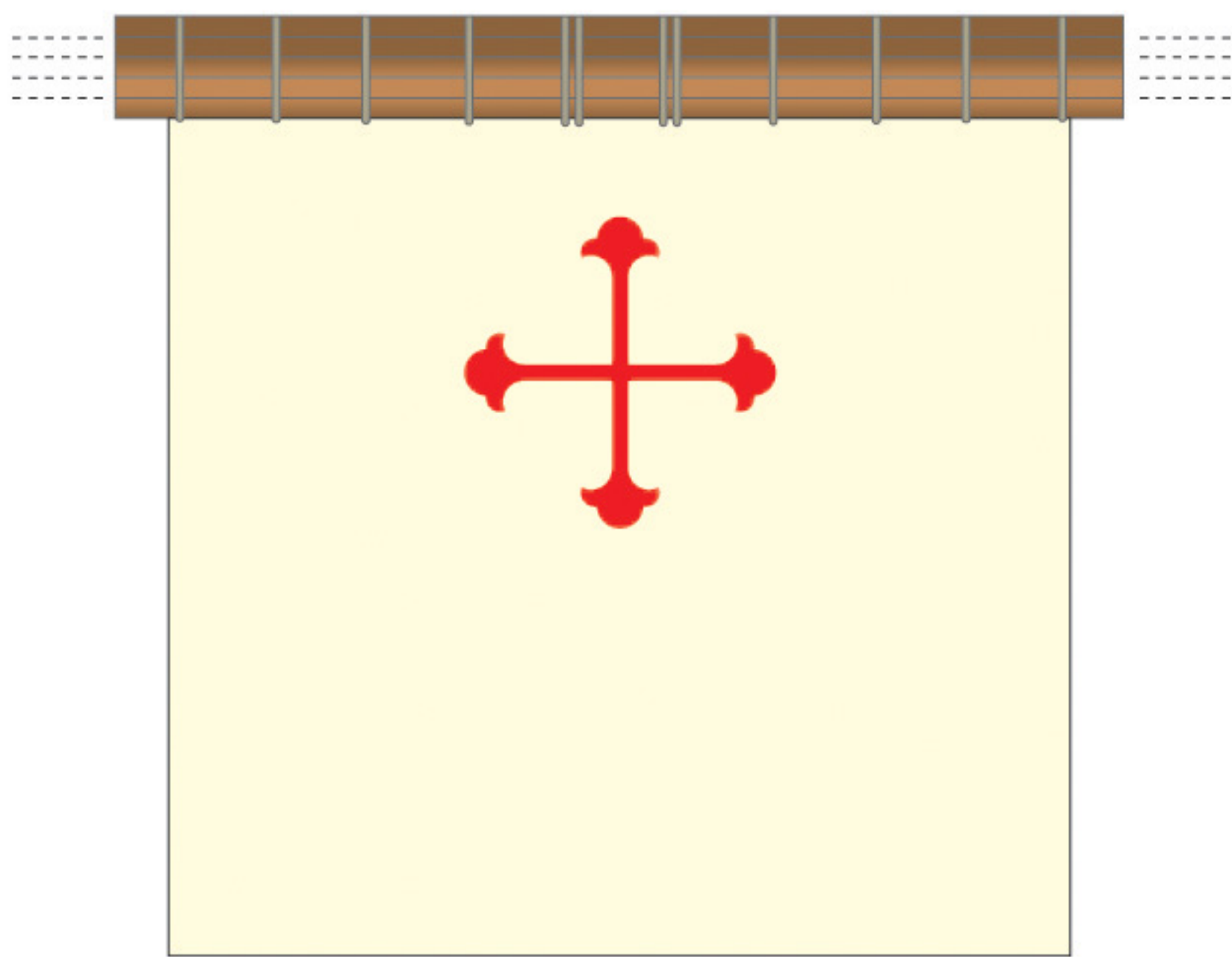
STERN TABS - FOLD DOWN
STERN - C

INSTRUCTIONS - A

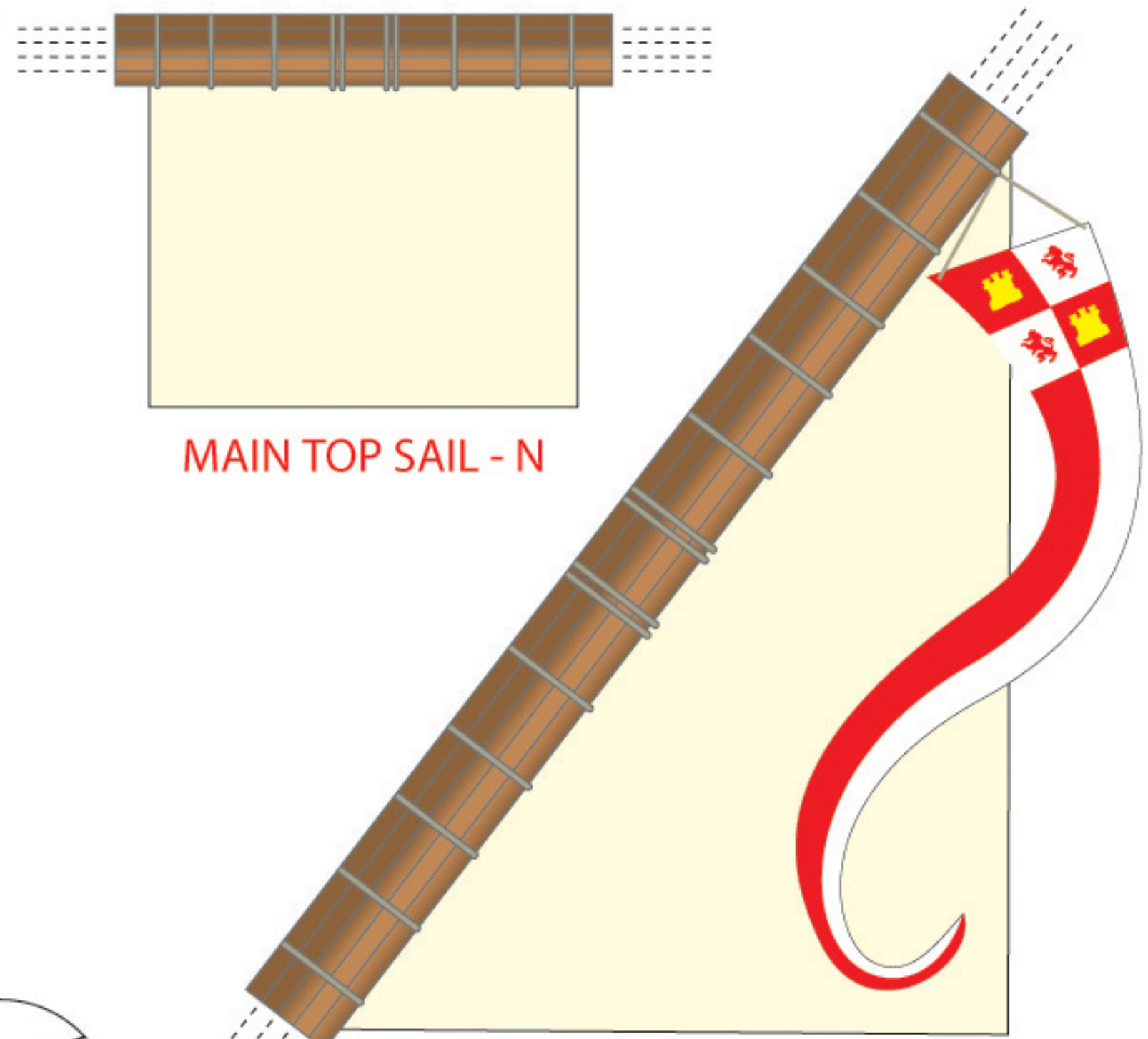
CUT ALL PIECES OUT. I RECOMMEND SCORING ALL THE FOLDS, ON THE BACK, WITH A BALL POINT PEN.

1. Fold **DECK D**, and glue the **AFT RAIL** back-to-back
2. On **PORT SIDE A** and **STARBOARD SIDE B**, fold the inside rails down and glue back-to-back to the outside rails, and fold the tabs up
3. On the **STARBOARD SIDE B**, and starting with the **FORWARD DECK D**, glue the deck to the tabs, followed by the **DECK SIDES**. Repeat with the **PORT SIDE A**
4. On the **STERN C**, fold the tabs in, and glue to the inside of the ship **SIDES A B** and **DECK D**
5. Glue the **BOW, KEEL**, and **RUDDER** together- back-to-back



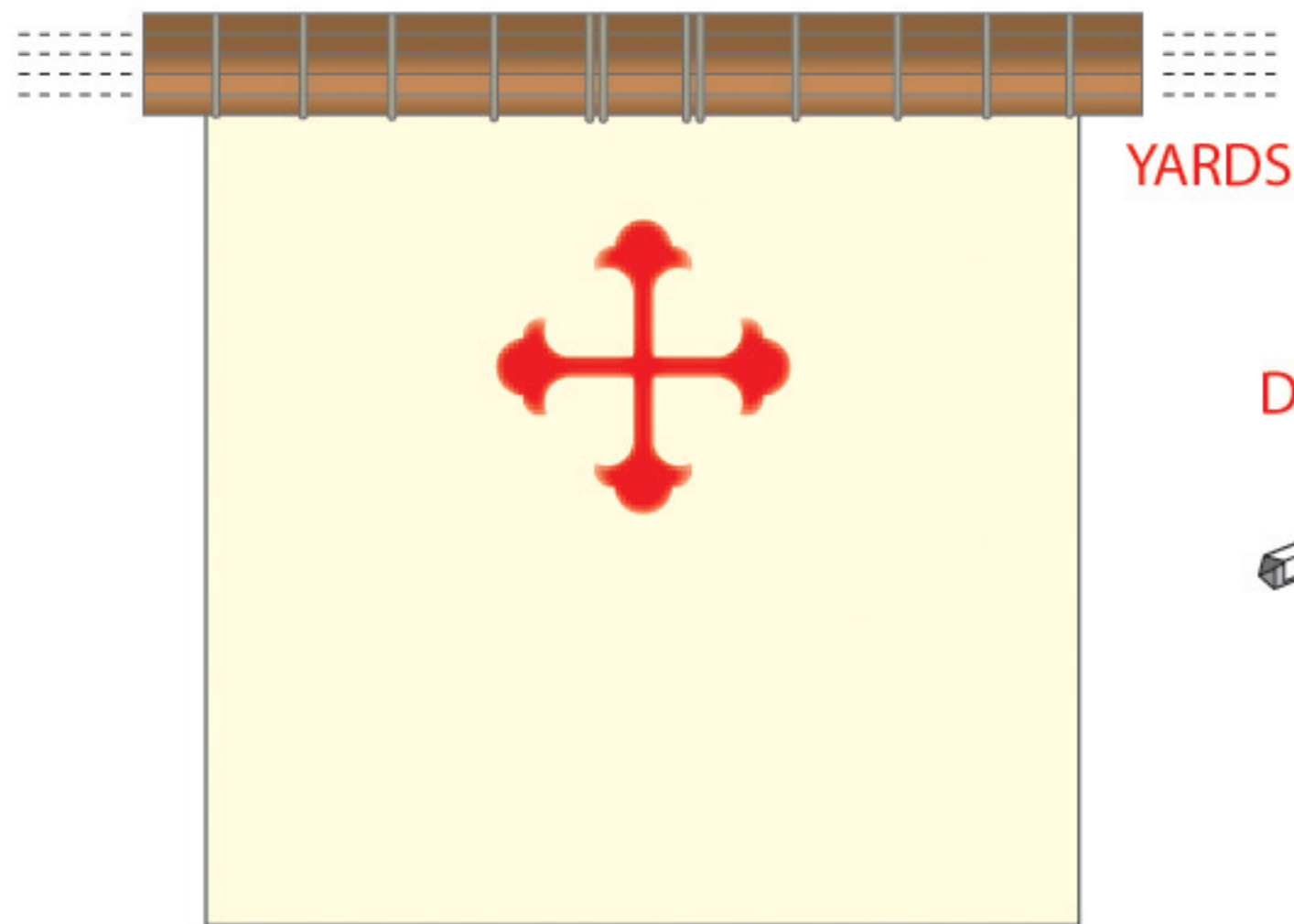


MAIN SAIL - M



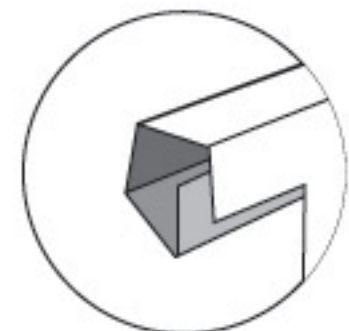
MAIN TOP SAIL - N

MIZZEN (AFT) SAIL - O

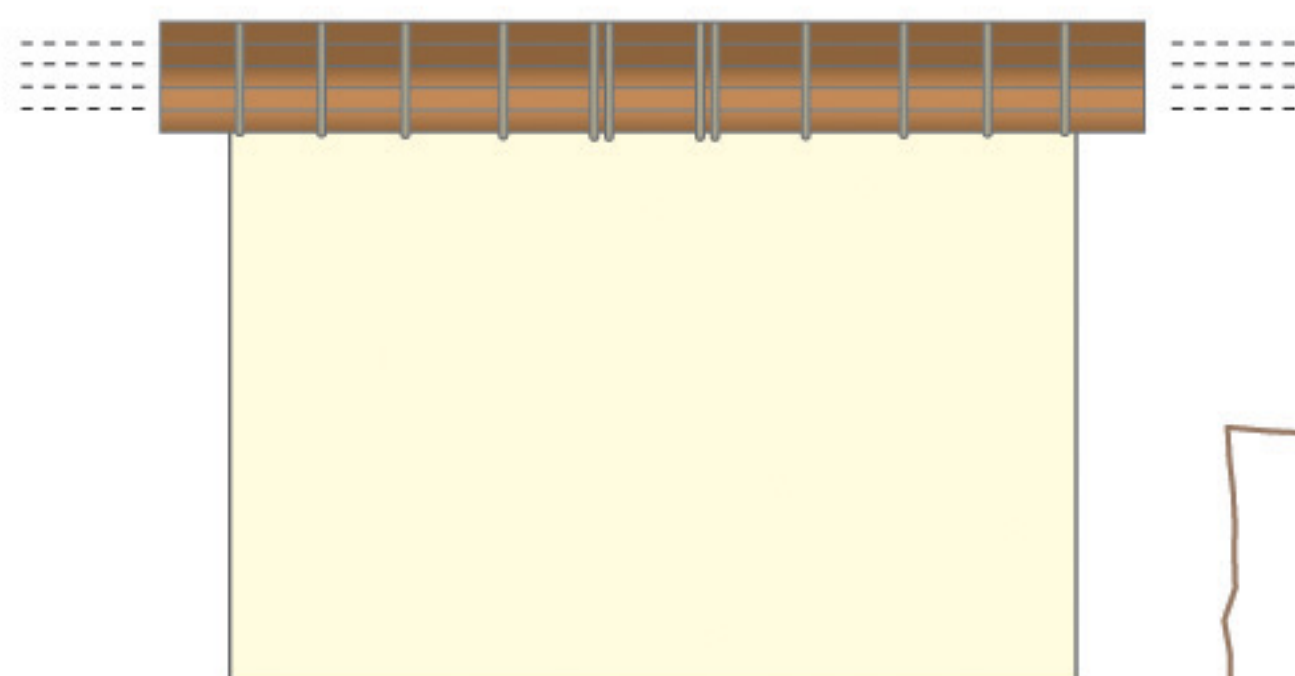


FORE SAIL - L

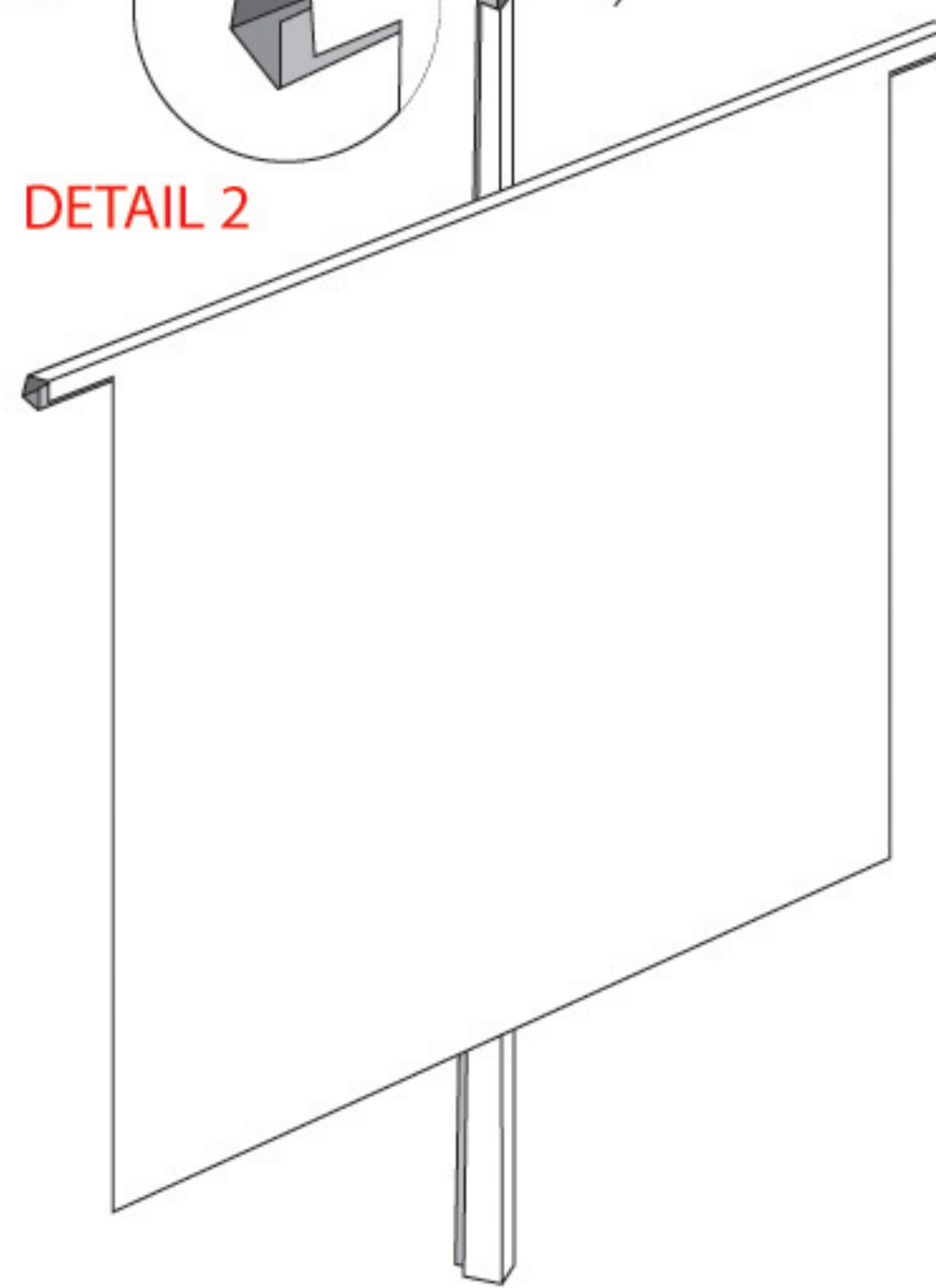
YARDS



DETAIL 2



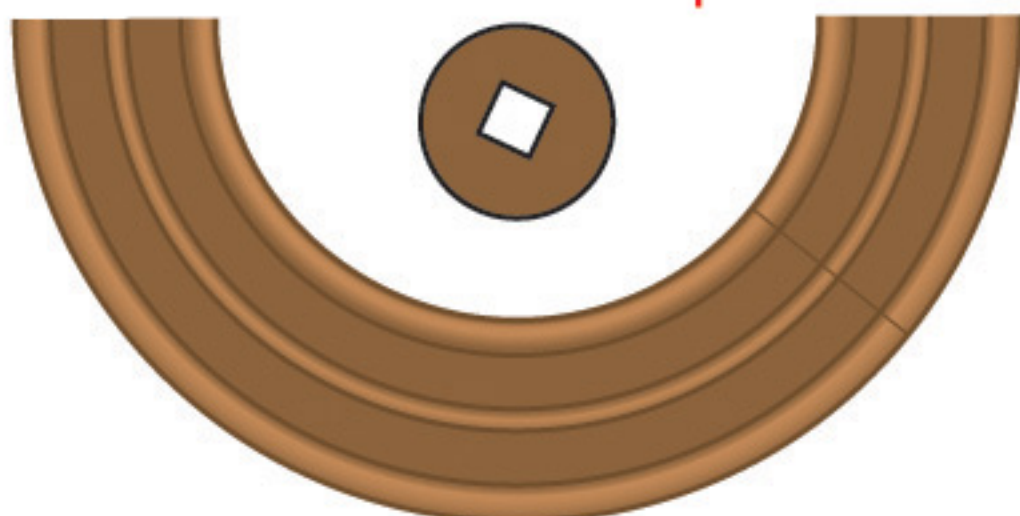
SPRIT (BOW) SAIL - K



FLAGS R



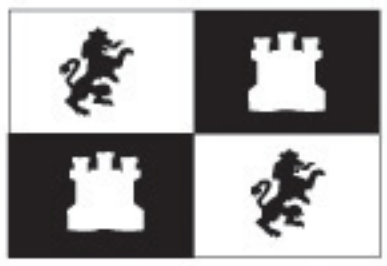
CROWS NEST FLOOR - Q
cut out center square



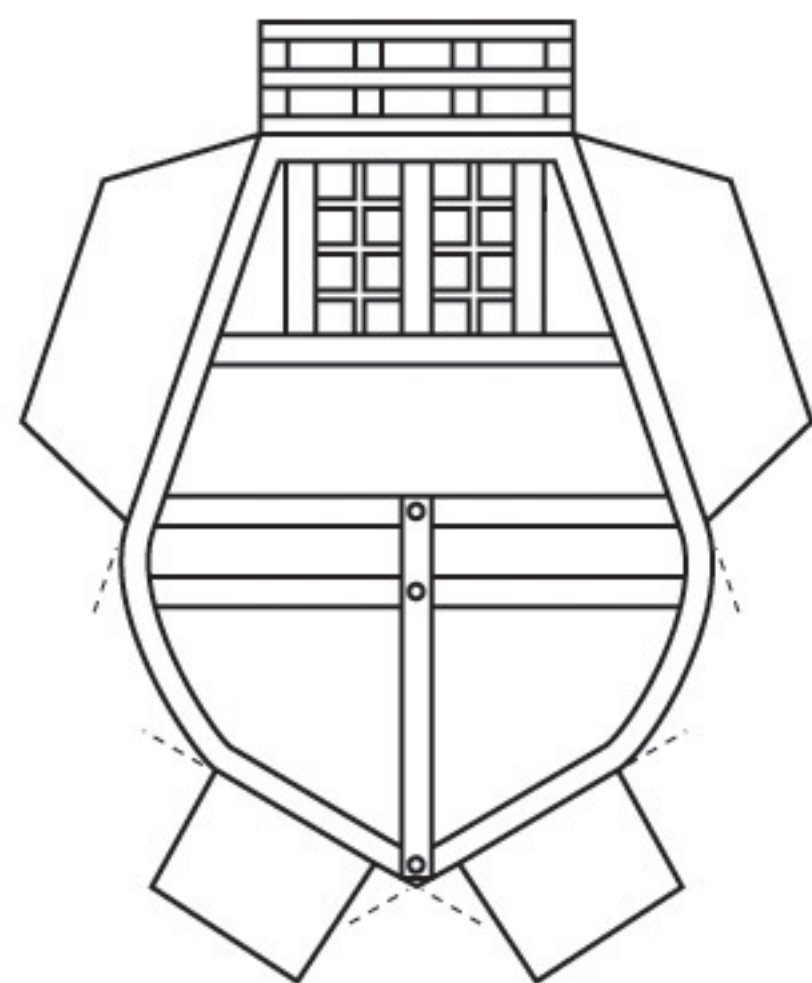
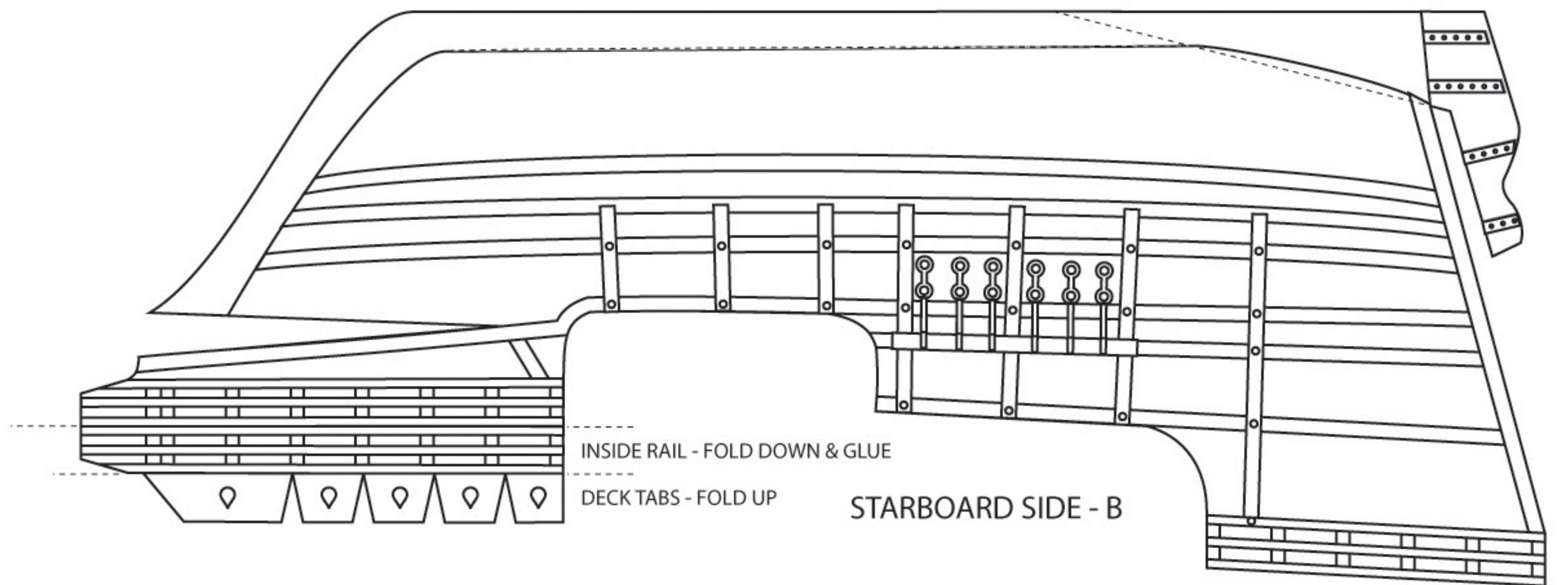
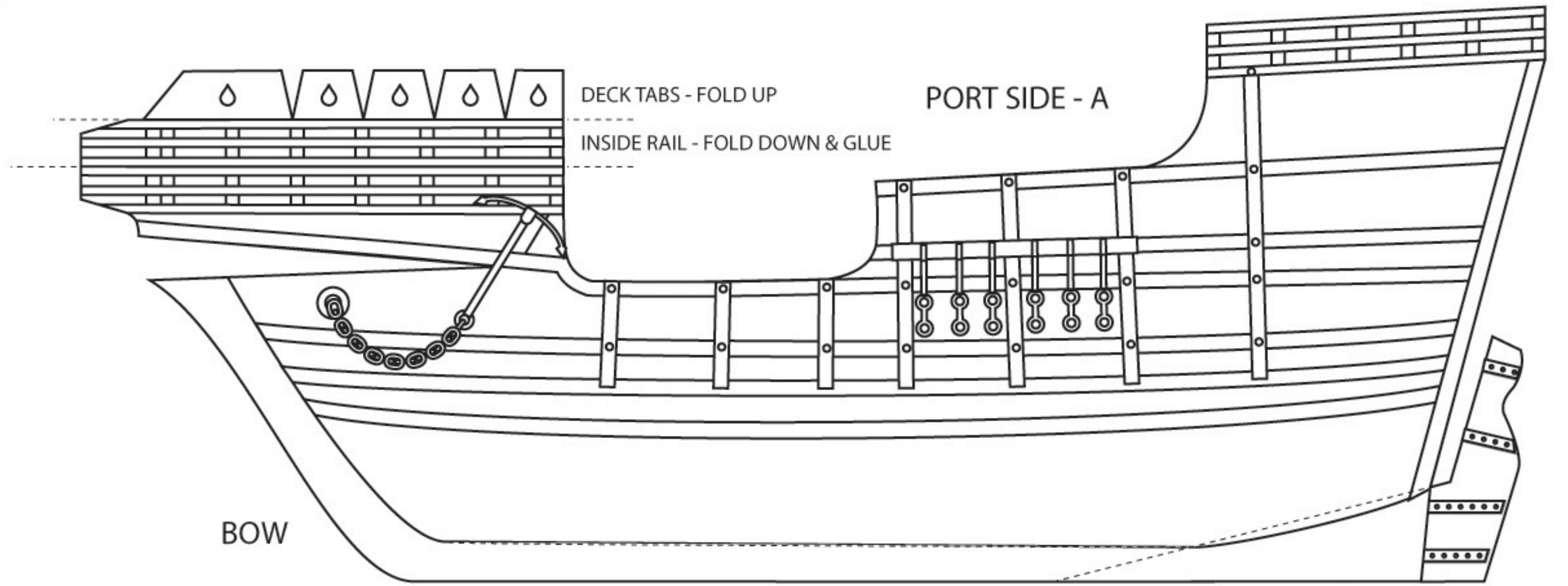
CROWS NEST - P

INSTRUCTIONS - B

1. Fold all 4 **MASTS G H I J**, and glue the fifth side inside of each, to create a square tube. (**detail 1**)
2. Fold the **YARDS** at the top of the **SAILS K L M N O**, and glue the fifth side inside. (**detail 2**)
3. Glue the **CROWS NEST P** to the **CROWS NEST FLOOR Q**, and slip down the **MAIN MAST I**
4. Glue the **SAILS** to the **MASTS**, and the **MASTS** to the **DECKS**
5. Glue the **SHROUDS** to the **SIDES** and **MASTS**
6. Glue the **FLAGS R** to toothpicks and insert in the tops of the masts



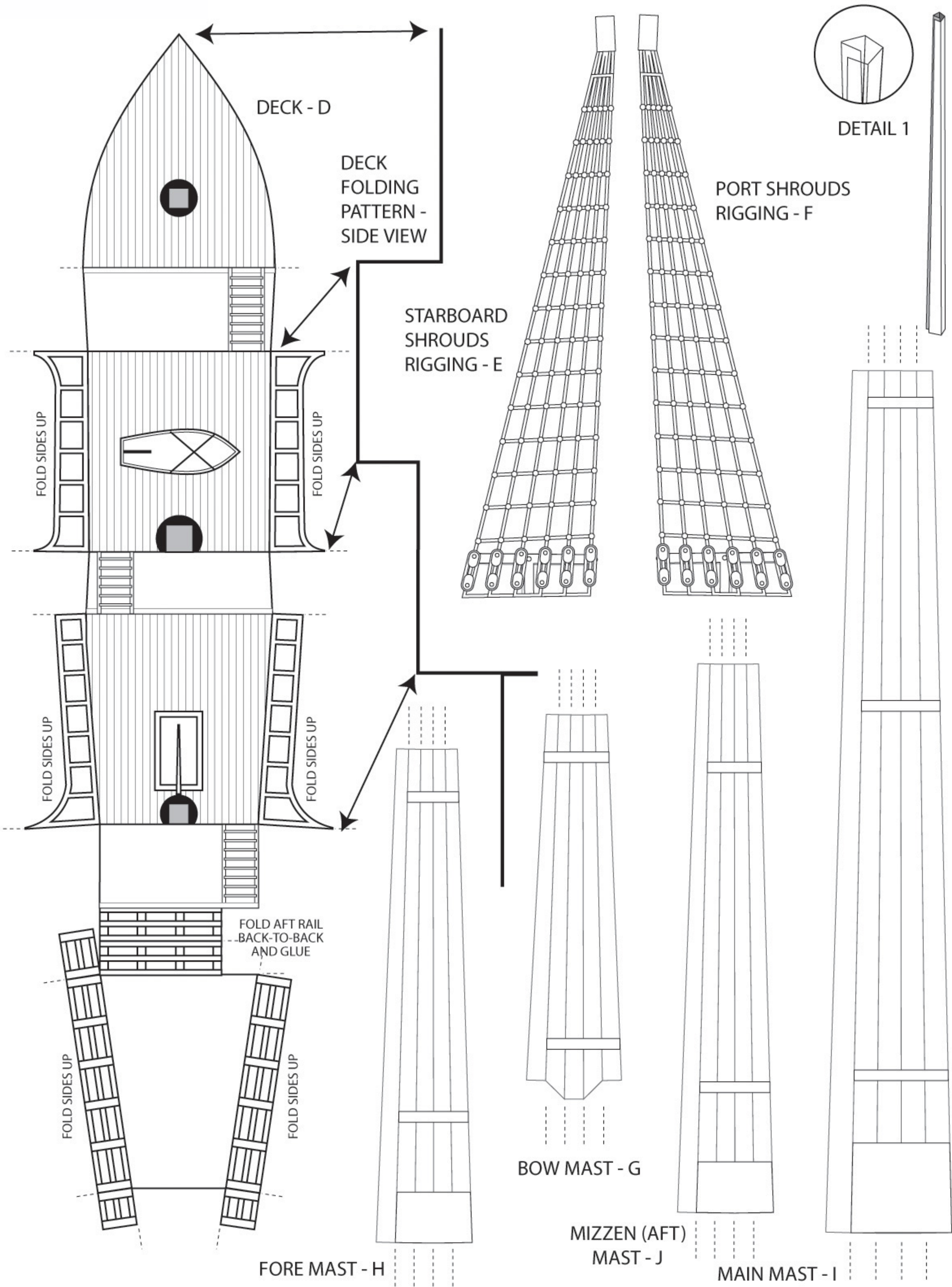
Christopher Columbus' *Santa Maria* - 1492

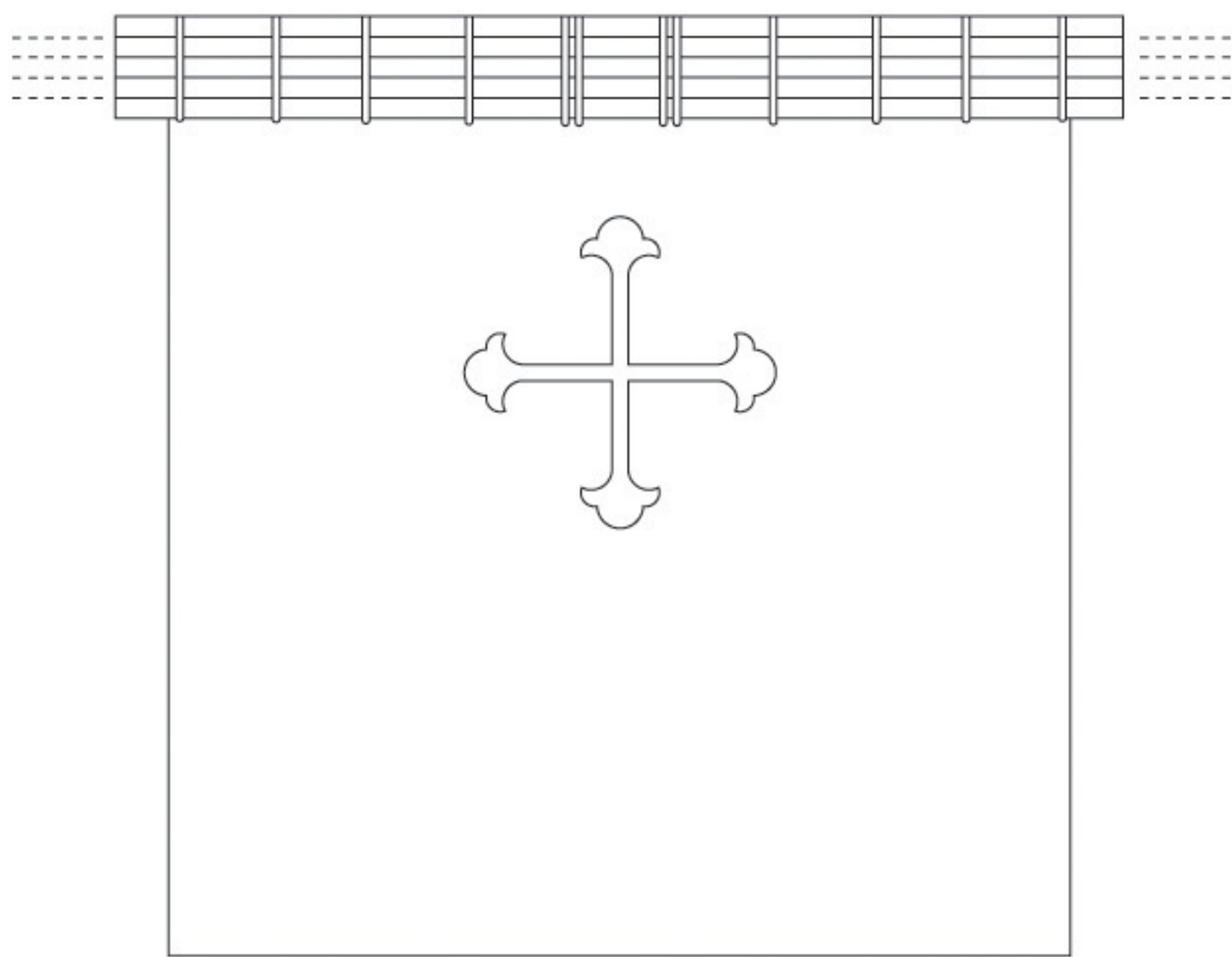


INSTRUCTIONS - A

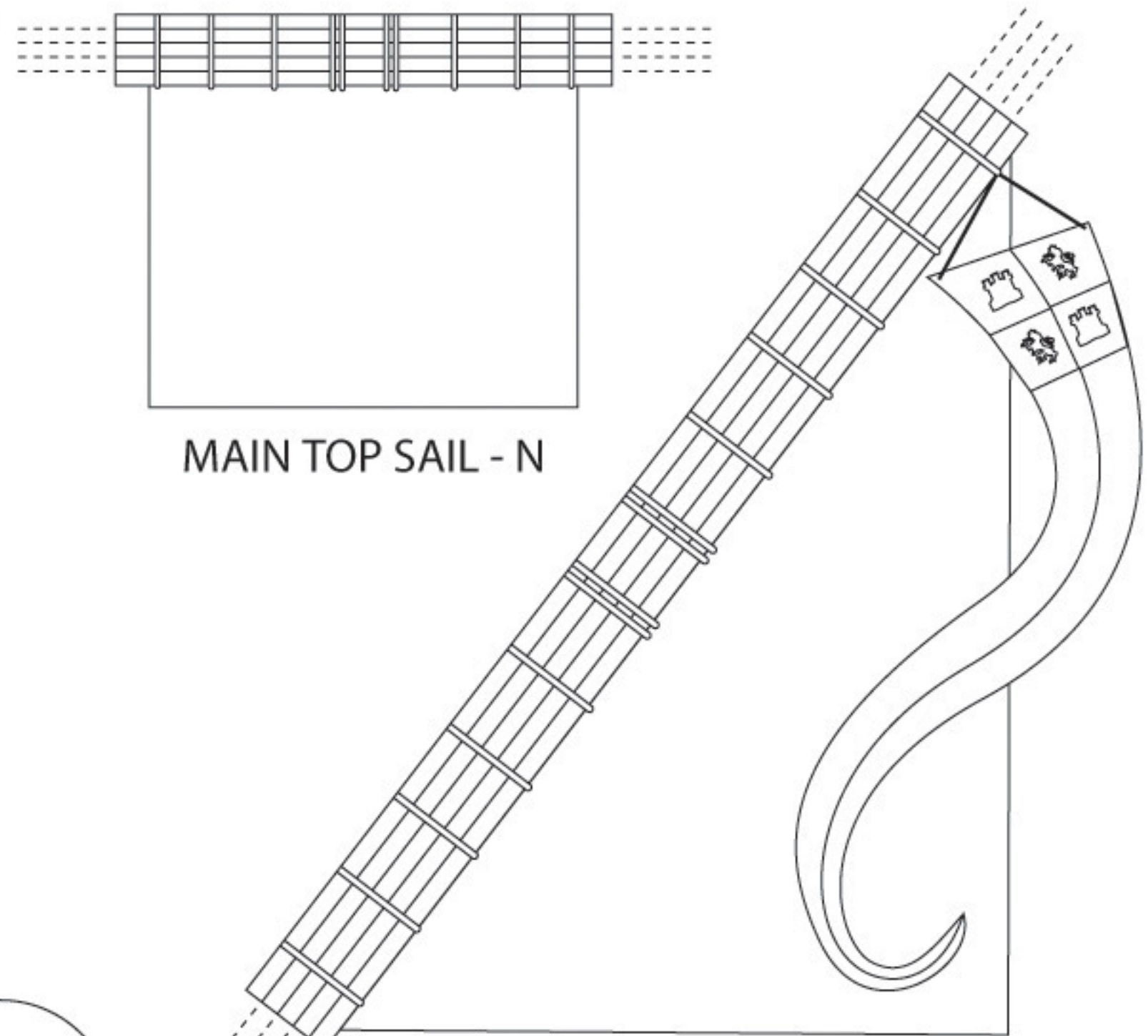
CUT ALL PIECES OUT. I RECOMMEND SCORING ALL THE FOLDS, ON THE BACK, WITH A BALL POINT PEN.

1. Fold DECK D, and glue the AFT RAIL back-to-back
2. On PORT SIDE A and STARBOARD SIDE B, fold the inside rails down and glue back-to-back to the outside rails, and fold the tabs up
3. On the STARBOARD SIDE B, and starting with the FORWARD DECK D, glue the deck to the tabs, followed by the DECK SIDES. Repeat with the PORT SIDE A
4. On the STERN C, fold the tabs in, and glue to the inside of the ship SIDES A B and DECK D
5. Glue the BOW, KEEL, and RUDDER together- back-to-back



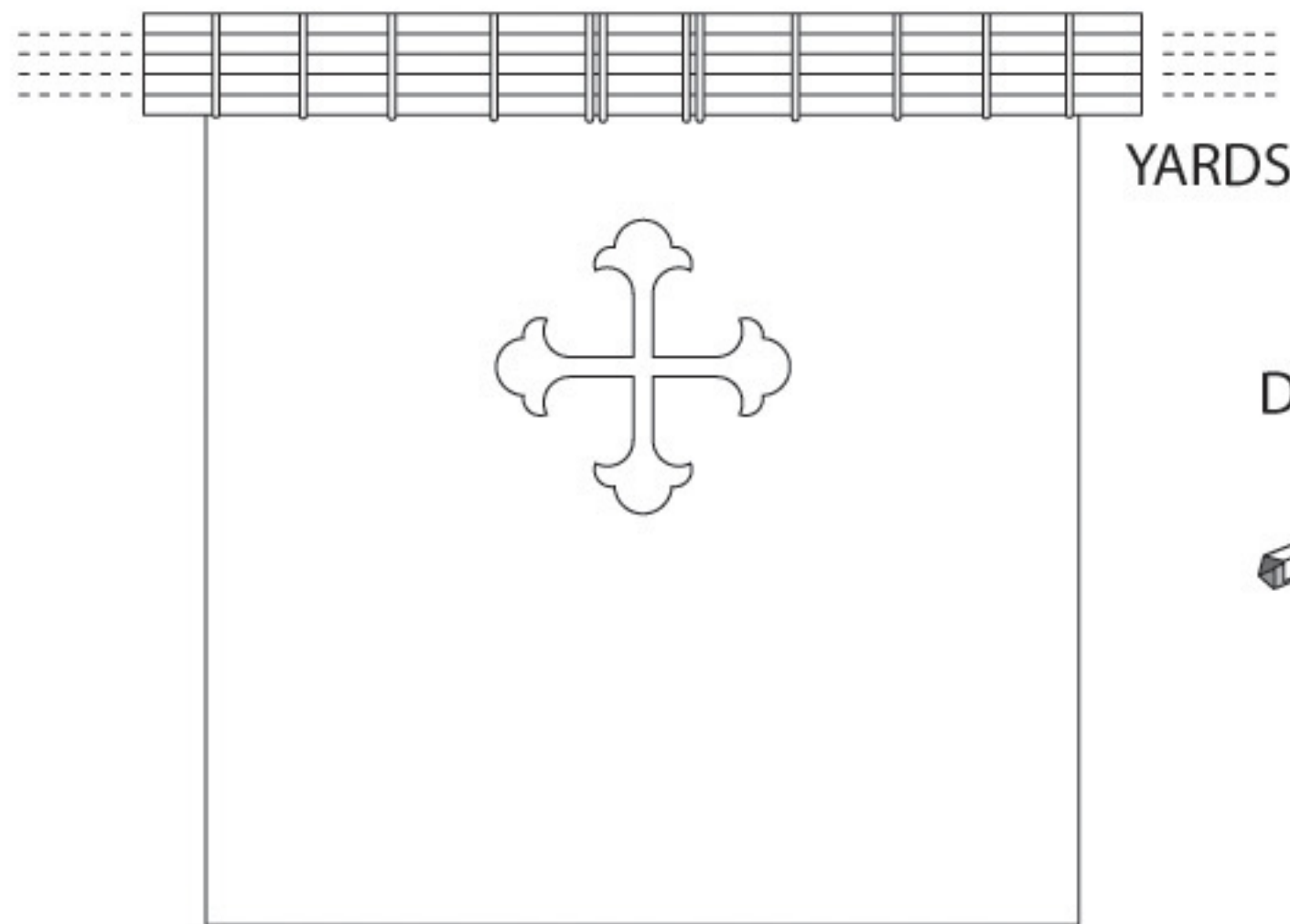


MAIN SAIL - M

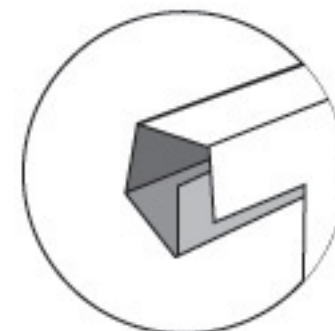


MAIN TOP SAIL - N

MIZZEN (AFT) SAIL - O



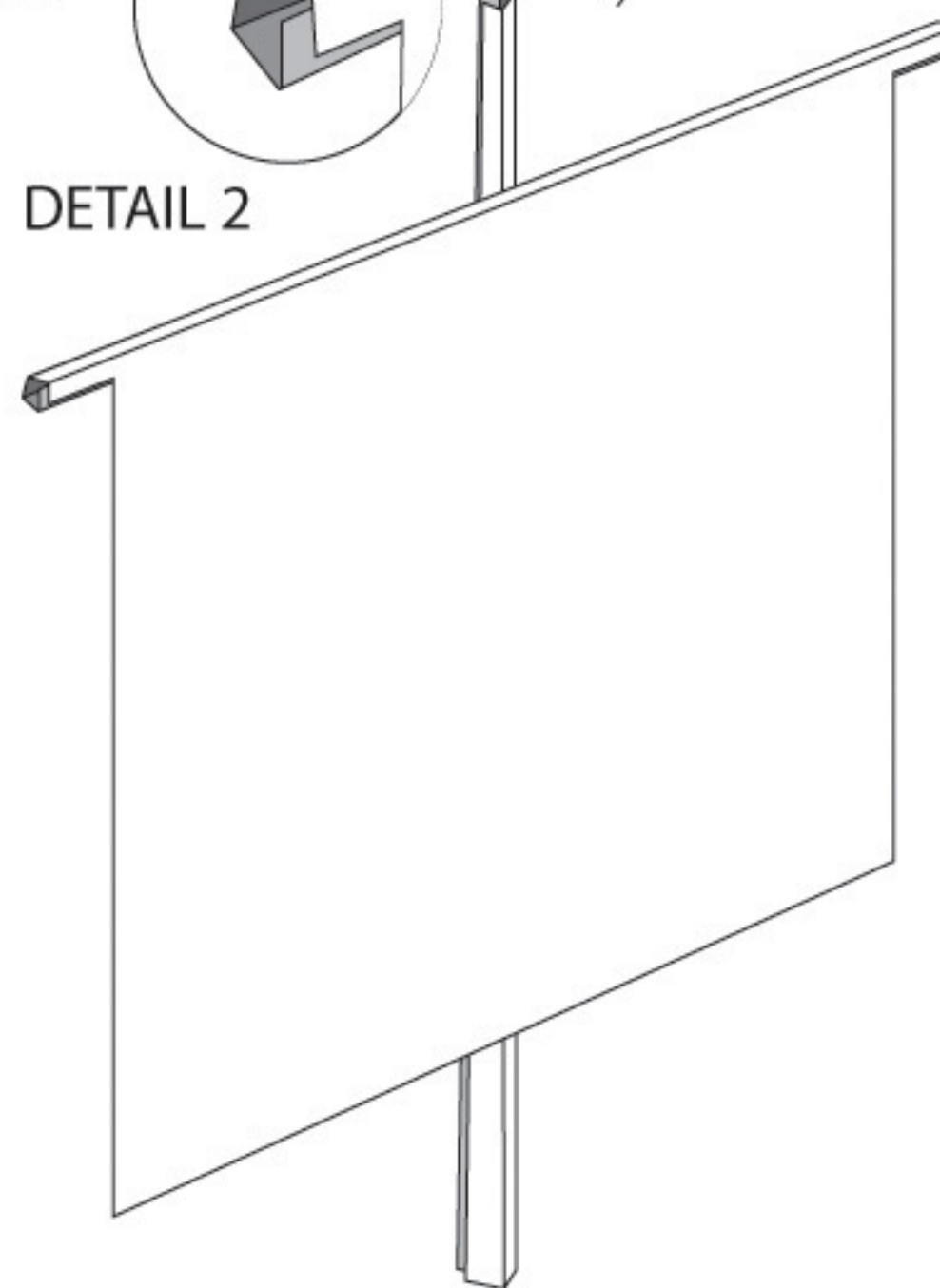
FORE SAIL - L



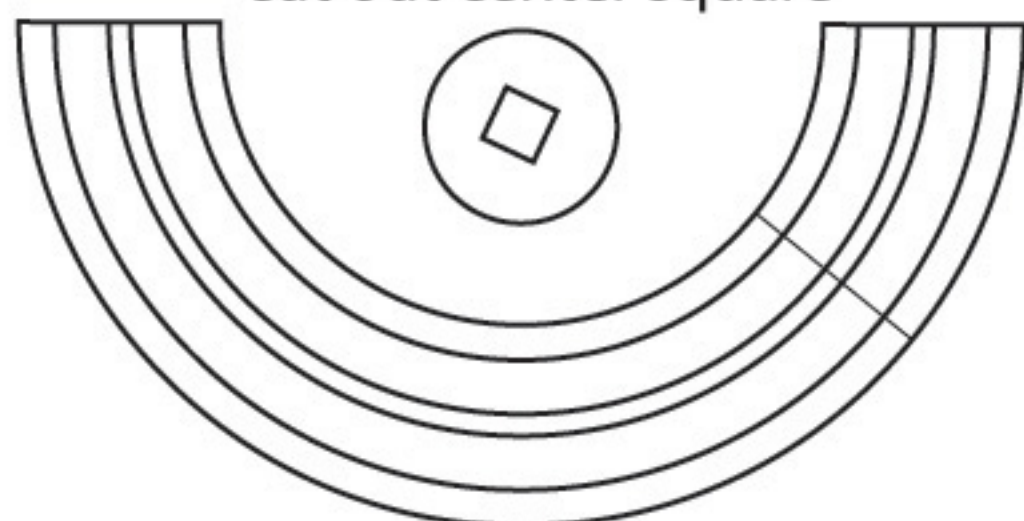
DETAIL 2



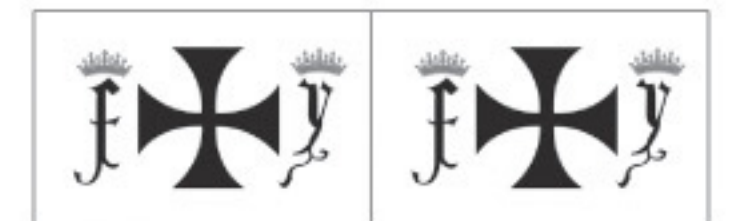
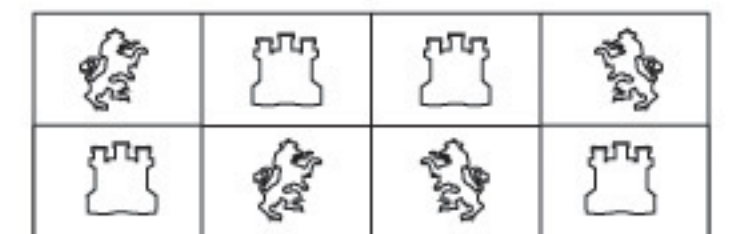
SPRIT (BOW) SAIL - K



CROWS NEST FLOOR - Q
cut out center square



CROWS NEST - P



FLAGS R

INSTRUCTIONS - B

1. Fold all 4 MASTS G H I J, and glue the fifth side inside of each, to create a square tube. (detail 1)
2. Fold the YARDS at the top of the SAILS K L M N O, and glue the fifth side inside. (detail 2)
3. Glue the CROWS NEST P to the CROWS NEST FLOOR Q, and slip down the MAIN MAST I
4. Glue the SAILS to the MASTS, and the MASTS to the DECKS
5. Glue the SHROUDS to the SIDES and MASTS
6. Glue the FLAGS R to toothpicks and insert in the tops of the masts

Christopher Columbus'

Santa Maria

1492

